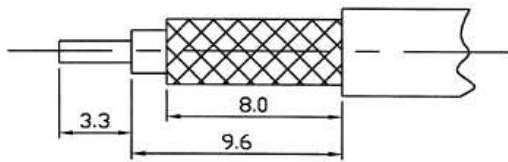
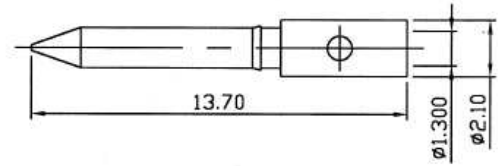
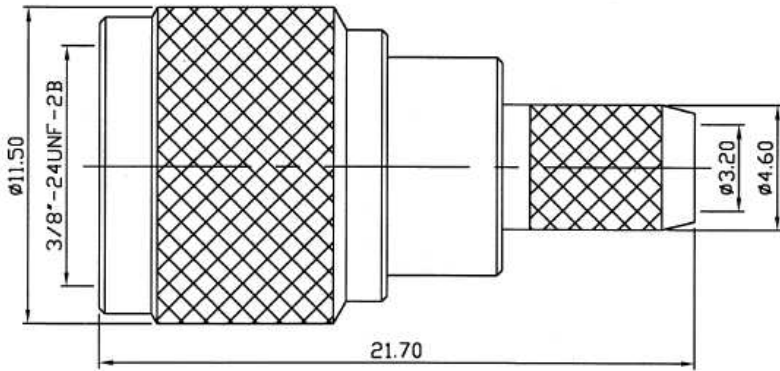
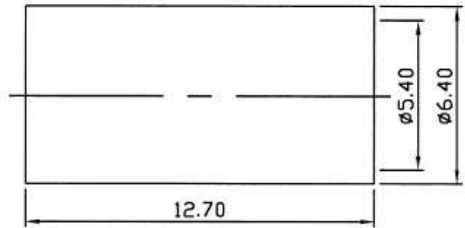


NOTICE OF PROPRIETARY RIGHTS THIS DOCUMENT CONTAINS CONFIDENTIAL TECHNICAL DATA, INCLUDING TRADE SECRETS, PROPRIETARY TO TIMES MICROWAVE SYSTEMS. DISCLOSURE OF THIS DATA IS EXPRESSLY CONDITIONED UPON YOUR ASSENT THAT ITS USE IS LIMITED TO USE WITHIN YOUR COMPANY ONLY. ANY OTHER USE IS STRICTLY PROHIBITED WITHOUT THE PRIOR WRITTEN CONSENT OF TIMES MICROWAVE SYSTEMS.

SYM	REVISION DESCRIPTION	DFTM	DATE	APPD	DATE
-	RELEASED FOR PRODUCTION	J. C. L.	8/15/96	J. C. L.	8/15/96
A	CHANGED PER CDC #34488	D. J. H.	11/23/11	J. D. B.	11/28/11



RECOMMENDED CABLE PREP.



MATERIALS & FINISH

BODY, SHELL & RING: BRASS, NICKEL PLATE.
 INSULATOR: DELRIN.
 CONTACT: BRASS, GOLD PLATE.



Australian Representatives
ROJONE, PTY LTD.
 Tel: 02 9829 1555
 E: sales@rojone.com.au
 www.rojone.com.au

MATERIAL:	UNLESS OTHERWISE SPECIFIED ALL DIMENSIONS ARE IN mm MACHINED SURFACES FINISH N/A RMS MAX. REMOVE ALL BURRS N/A MAX. BREAK MACHINE CORNERS N/A MAX. FILLET R. TOLERANCES ON DECIMALS . XX ± 0.1 . XXX ± 0.05 ANGLES ± 3° . X ± 0.5	DFTM. J. C. L.	TIMES MICROWAVE SYSTEMS
		DATE 8/15/96	
USED ON: B		CHKD. J. C. L.	TC-200-MUHF MINI-UHF MALE FOR LMR-200
		DATE 8/15/96	
SCALE: N/A	DWG. SIZE A	APPD. J. C. L.	SHEET 1 of 1
		DATE 8/15/96	
DO NOT SCALE DRAWING	CODE IDENT 68999	DATE 8/15/96	REV A