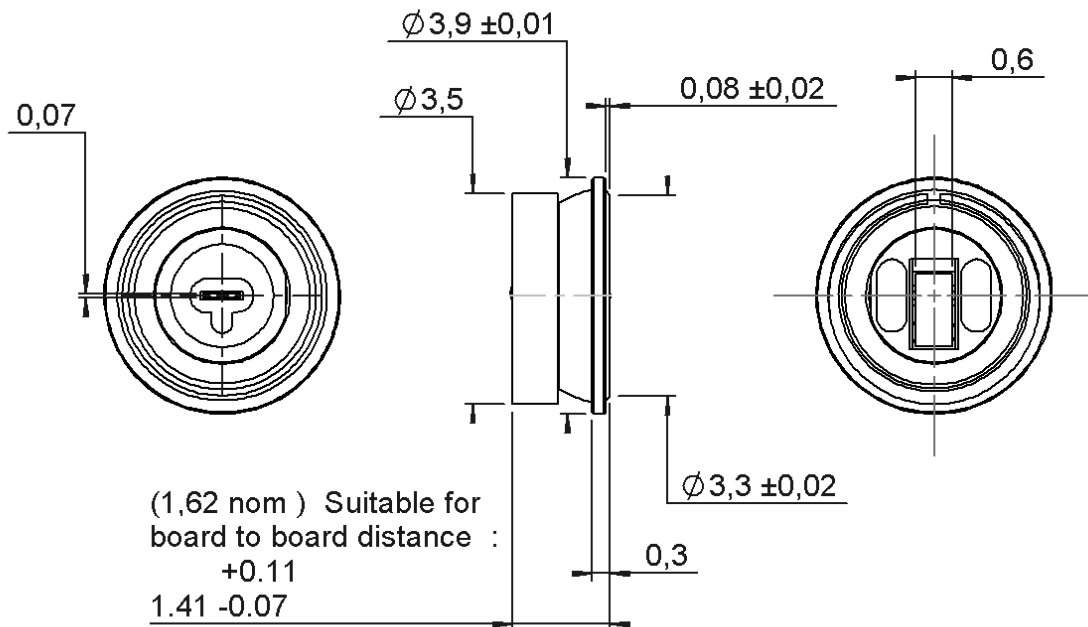


PAGE 1/3

ISSUE 29-10-18A

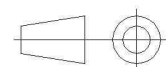
SERIES IMP

PART NUMBER R107802000



scale 1/1

All dimensions are in mm. Tolerances according ISO 2768 m-H



COMPONENTS	MATERIALS	PLATING ( $\mu\text{m}$ )
Body	<b>BRONZE</b>	<b>NPGR</b>
Center contact	<b>BERYLLIUM COPPER</b>	<b>GOLD 1.3 OVER NICKEL2</b>
Outer contact		
Insulator	<b>PEEK</b>	
Gasket		
Others parts	<b>BERYLLIUM COPPER</b>	<b>NPGR</b>
-	-	-
-	-	-



**Australian Representatives**  
**ROJONE, PTY LTD.**  
 Tel: 02 9829 1555  
 E: sales@rojone.com.au  
 www.rojone.com.au

PAGE 2/3

ISSUE **29-10-18A**

SERIES **IMP**

PART NUMBER **R107802000**

## PACKAGING

Standard	Unit	Other
<b>100</b>	<b>Contact us</b>	<b>Contact us</b>

## ELECTRICAL CHARACTERISTICS

Impedance	<b>50</b>	$\Omega$
Frequency	<b>0-18</b>	GHz
VSWR	<b>* + 0,0000</b>	x F(GHz) Maxi
Insertion loss	<b>**</b>	$\sqrt{F}$ (GHz) dB Maxi
RF leakage	<b>- ( NA</b>	- F(GHz)) dB Maxi
Voltage rating	<b>225</b>	Veff Maxi
Dielectric withstanding voltage	<b>500</b>	Veff mini
Insulation resistance	<b>1000</b>	M $\Omega$ mini

## MECHANICAL CHARACTERISTICS

Center contact retention		
Axial force – Mating End	<b>0.5</b>	N mini
Axial force – Opposite end	<b>0.5</b>	N mini
Torque		N.cm mini

Recommended torque	
Mating	N.cm
Panel nut	N.cm

Mating life	<b>50</b>	Cycles mini
Nominal Weight	<b>0,0600</b>	g
(Add +15% for max weight)		

## ENVIRONMENTAL

Operating temperature	<b>-55/+125</b>	°C
Hermetic seal	<b>NA</b>	Atm.cm3/s
Panel leakage	<b>NA</b>	

## SPECIFICATION

## OTHER CHARACTERISTICS

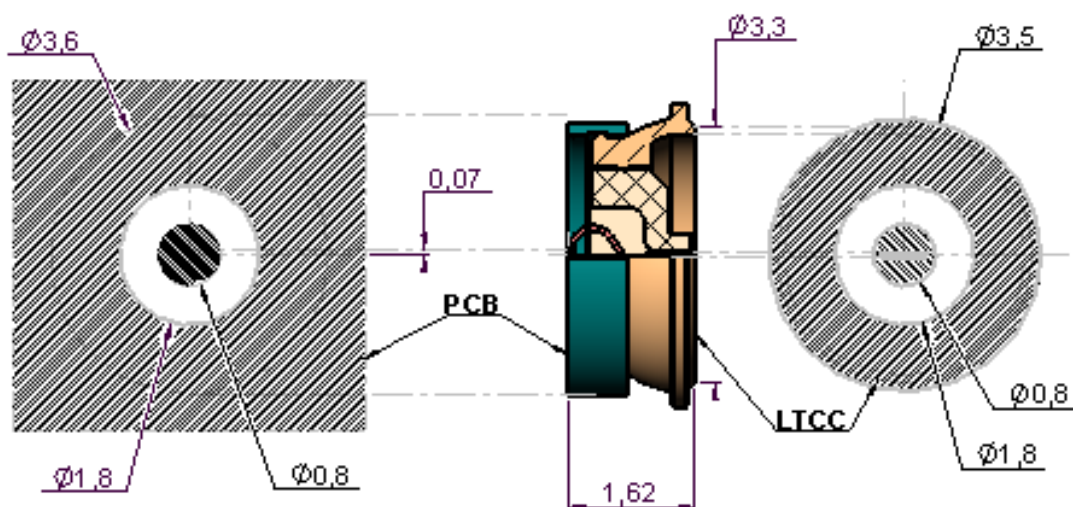
Assembly instruction:

Others:

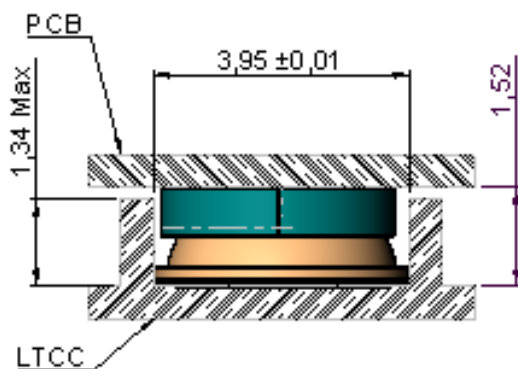
**\*V.S.W.R: 1.3 max DC-12GHz**

**\*V.S.W.R: 1.5 max ->18GHz**

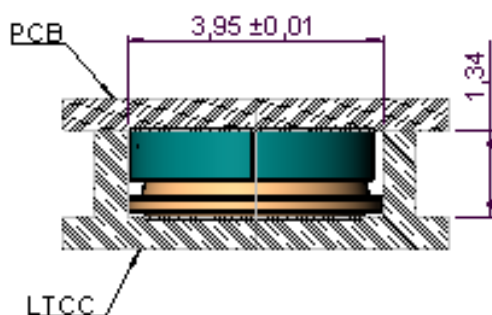
**\*\*0.13dB maxi**



## **2 - COMPRESSED : 1.52**



## **3 - COMPRESSED : 1.34**



## **1 - UNCOMPRESSED**

