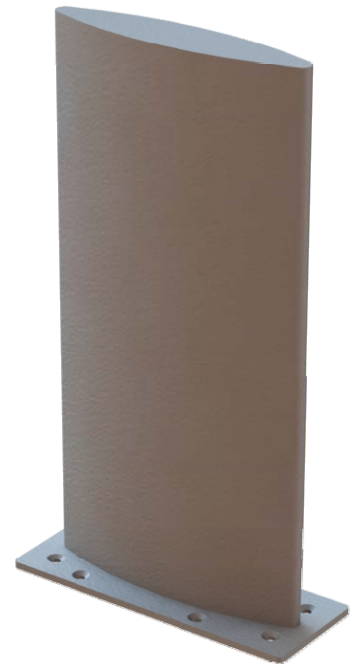




21-50-26-2
Broadband Airborne Blade
Antenna
30 to 512 MHz & 960 to 1220 MHz

FEATURES

- **Frequency Selective Matching Network**
- **Passive design-requires no external tuning**
- **Fully Foamed to Provide High Environmental Integrity**
- **Aluminum Alloy Base Mounting Accepts High Side Loading**
- **Suitable for AN/ARC-210, AN/ARC-231 and Similar Multi-Mode Radios**
- **Designed to comply with MIL-STD-810 environmental conditions**



The 21-50-26-2 is a vertically polarized, omni-directional antenna, compatible with all popular airborne radios operating within the 30 to 512 MHz frequency range plus Link16, Tacan, IFF, JTIDS and other L-band systems.

This wideband, multi-function antenna developed by Cooper Antennas Ltd is particularly suited to tactical military communications. Rugged design ensures reliability in world wide conditions of service on aircraft operating at speeds up to Mach 0.95.

The element is DC grounded for high voltage transfer protection.

Cooper Antennas Ltd for non-USA customers
Thames Industrial Estate, Unit K, Fieldhouse Lane,
Buckinghamshire SL7 1TB, UK
Tel: +44 (0) 1628 482 360
Email: sales@cooperantennas.com
www.cooperantennas.com



Australian Representatives
ROJONE, PTY LTD.
Tel: 02 9829 1555
E: sales@rojone.com.au
www.rojone.com.au

SPECIFICATIONS

Cooper Antennas Model 21-50-26-2 Broadband & L-Band Blade Antenna

ELECTRICAL

Frequency	30 - 88 MHz, 108 - 174 MHz, 225 - 512 MHz
Gain	30 MHz ≥ -25 dBi 60 MHz ≥ -20 dBi 88 MHz ≥ -12 dBi 118-174 MHz ≥ -4 dBi average 225-512 MHz ≥ 0 dBi average 960-1220 MHz +1 dBi average
VSWR	≤ 2.5:1 30 - 88 MHz ≤ 3.0:1 108 - 117 MHz ≤ 2.5:1 118 - 174 MHz & 225 - 512 MHz ≤ 2.0:1 960 - 1220 MHz
Impedance (nominal)	50 Ohms
Power	VHF/UHF - 50 Watts CW L-band - 2 kW Watts peak
Polarization	Essentially vertical (when mounted vertically)
Antenna RF Connector	V/UHF - TNC Female L-Band - N Female

MECHANICAL

Antenna Shell Type	High density foam filled epoxy/fiber glass shell set on aluminum alloy base
Height	13 inches (331mm)
Weight	3 lbs (1.4 kg)
Side Loading	≥5 psi ultimate
Base Plate Shape	Rectangular
Fixing Holes	8 x Ø 0.200 inches (5mm) holes, counter sunk 100°

FINISH

COLOR DESCRIPTION

21-50-26-2	Lusterless Gray
------------	-----------------

Other finish options are available. Please specify required finish when ordering.

Note: Cooper Antennas Ltd has a policy of continuous product improvement and data herein is therefore subject to change.
Please check with Cooper Antennas Ltd that this data sheet is at latest issue before initiating contract activity.