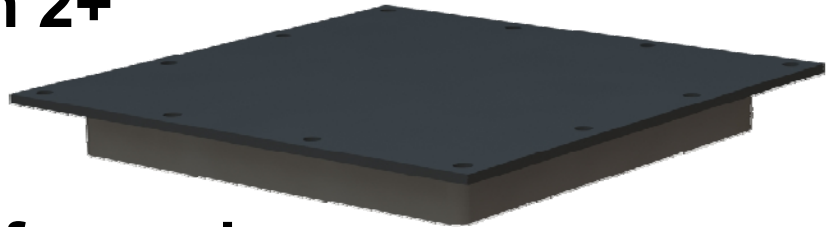




21-40-88  
CONFORMAL DIRECTIONAL IFF  
ANTENNA  
1030 and 1090 MHz

## FEATURES

- **Fits flush to aircraft skin**
- **Suitable for Mach 2+**
- **8 dBi linear gain**
- **20mm depth**
- **Fully sealed and foamed for long term reliability**
- **Designed to MIL-STD-810 environmental conditions.**



The 21-40-88 is a high gain, flush mounted IFF antenna suitable for use in array's, or individually when directivity is required.

The antenna comprises a thick micro strip element with coaxial line matching and is capable of handling 1 kW peak power at IFF frequencies. Construction uses a machined aluminium alloy square box surmounted by a high strength glass/epoxy radome, the whole assembly being suitable for supersonic flight envelopes.

Cooper Antennas Ltd for non-USA customers  
Thames Industrial Estate, Unit K, Fieldhouse Lane,  
Buckinghamshire SL7 1TB, UK  
Tel: +44 (0) 1628 482 360  
Email: [sales@cooperantennas.com](mailto:sales@cooperantennas.com)  
[www.cooperantennas.com](http://www.cooperantennas.com)



Australian Representatives  
**ROJONE, PTY LTD.**  
Tel: 02 9829 1555  
E: [sales@rojone.com.au](mailto:sales@rojone.com.au)  
[www.rojone.com.au](http://www.rojone.com.au)

# SPECIFICATIONS

## Cooper Antennas Model 21-40-88

### ELECTRICAL

Frequency range	1030 ± 5 & 1090 ± 5 MHz
Impedance	50 Ω nominal
VSWR	1.5:1 max
Power	1 kW peak
Polarization	Vertical (horizontal typically -20 dB)
Gain (typical)	+8 dBiL
Pattern	74° azimuth beam width (nominal) 64° elevation beam width (nominal) see graphs
Connector	TNC Female

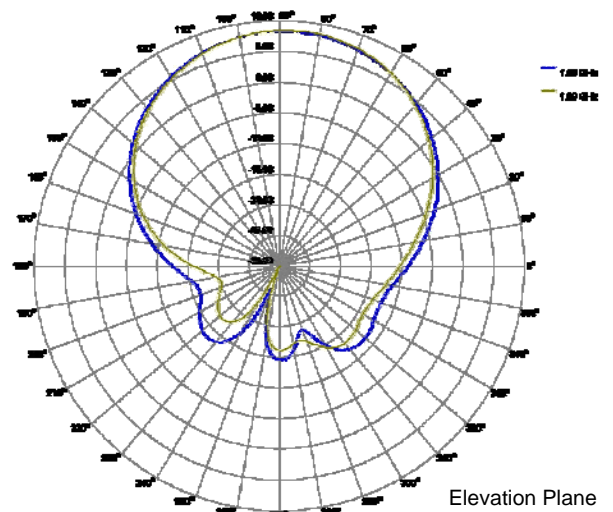
### MECHANICAL

Dimensions	180mm square 20mm deep
------------	---------------------------

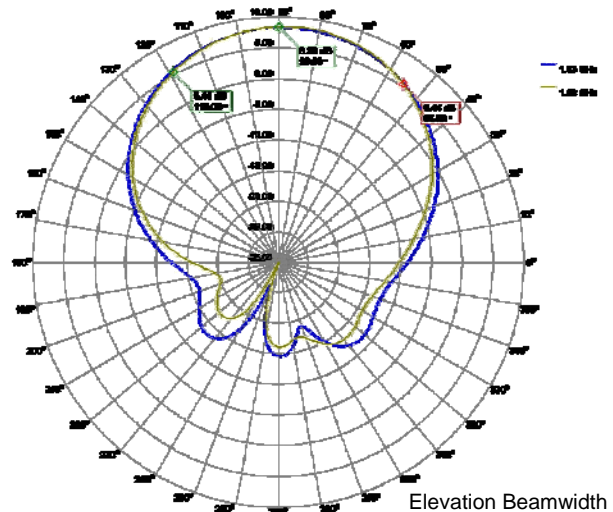
### FINISH

Antenna Lusterless Black

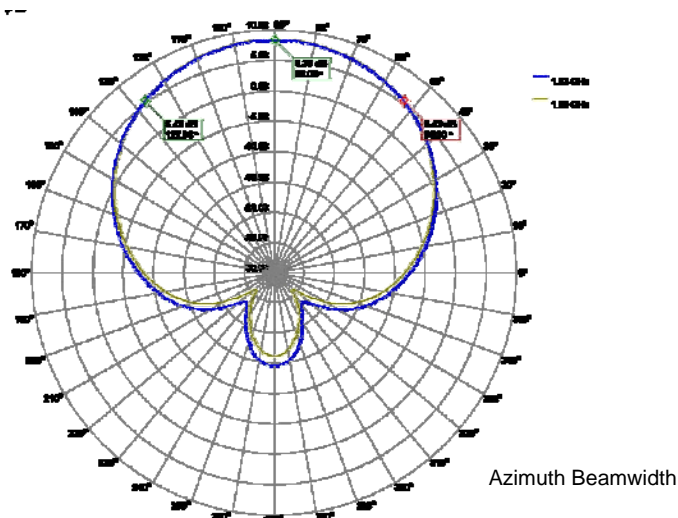
Other finish options are available. Please specify finish required when ordering.



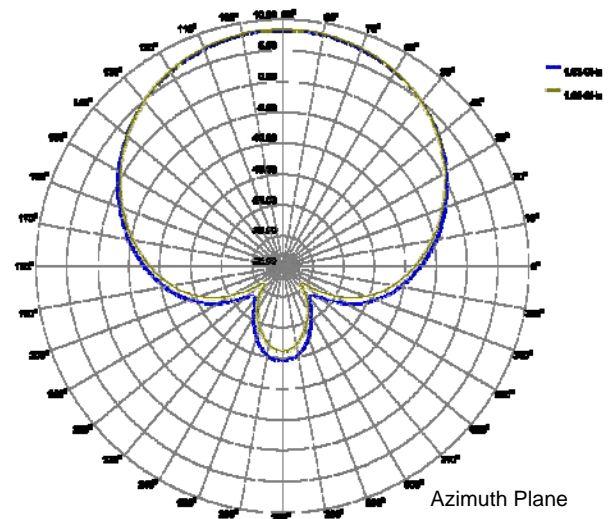
Elevation Plane



Elevation Beamwidth



Azimuth Beamwidth



Azimuth Plane

**Note: Cooper Antennas Ltd has a policy of continuous product improvement and data herein is therefore subject to change. Please check with Cooper Antennas Ltd that this data sheet is at latest issue before initiating contract activity.**